



COMMERCIAL SYSTEMS

TRANSITIONS

CUSTOMER PATHS TO THE NEW
HYBRID WORK EXPERIENCES

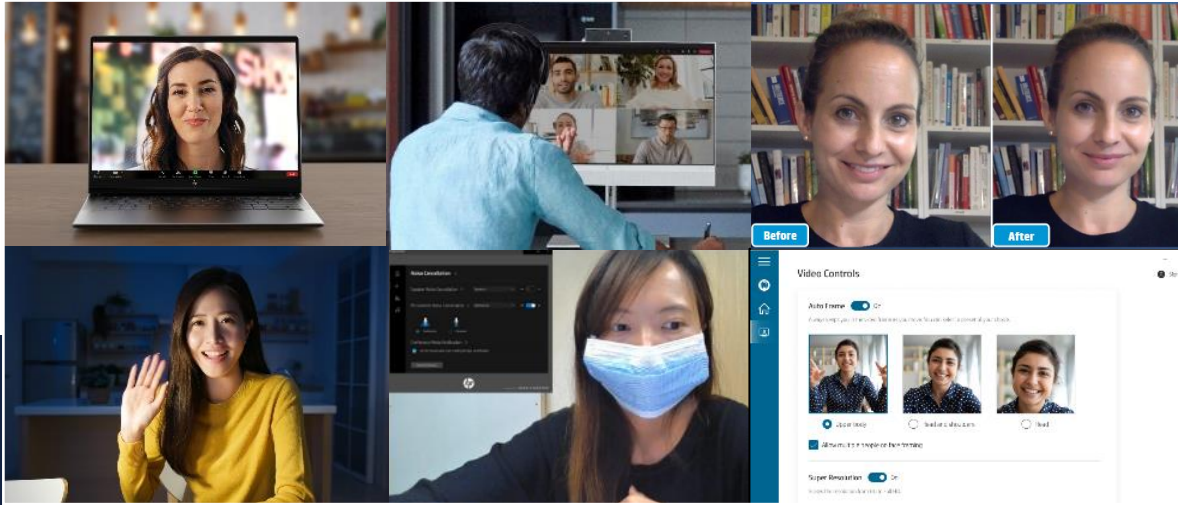
FEB 2023



THE DESKTOP EXPERIENCE FOR HYBRID WORK
INNOVATIONS THAT POWER

A BETTER WAY TO BE SEEN, BE HEARD, AND TO SHARE IDEAS

NOW ON DESKTOP PCS



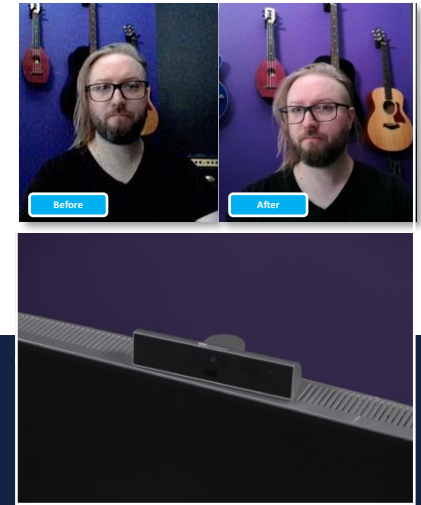
Look and sound your best in all spaces with

- Upgraded 5MP camera
- Integrated Backlight and Lowlight adjustment software^{2,5}
- Beautification filter
- Bi-directional Ai-based Noise reduction^{1,5}
- AI-based HP Clear Voice
- MyHP app⁴



Move naturally while I communicate with

- HP Auto Frame^{1,5,6}
- HP Dynamic Voice Leveling^{1,5,6}



Enhanced experiences

- 16MP Binning Camera⁸

HP Presence



ALL YOU NEED FOR HYBRID WORKS

BETTER COLLABORATION EXPERIENCES

Virtual meetings have exploded with hybrid work

Backlight adjustment



Lowlight adjustment



Not everyone has optimal lighting or control over interruptions

Superb resolution



HP Auto Frame



Dynamic Voice Leveling

Collaborate in any lighting situation and present a clear image

EliteOne (800) and ProOne (400)

Backlight Adjustment^{2,5}

Lowlight Adjustment^{2,5}

Look and sound clear and focus without worrying about distracting others (or being distracted)

EliteOne 800 Series

16MP Binning⁸ 180 Degree Swivel Webcam

EliteOne (800) and ProOne (400)

AI-based noise reduction 2.0^{1,5}

Move around naturally while you collaborate and stay engaged

EliteOne (800) and ProOne (400)

HP Dynamic Audio⁷

HP Sound Calibration 2.0¹³

HP Auto Frame^{1,5}

EliteOne 800 Series

HP Dynamic Voice Leveling^{1,5,6}





Only available on the EliteOne 800 G9

STAY CHARGED WITH THE CHARGER YOU CAN'T LOSE

ALWAYS CHARGED = ALWAYS READY

No need to search for your charging cable

CLUTTER-FREE DESK = CLUTTER-FREE MIND

You not only save space on your desk you can also eliminate the need for having your charging cables on your desk

CABLE FREE = CLUTTER FREE

With built-in cable management and an optional wireless charging Qi stand ^{9,10,27}

Set. Charge. Go.



HP RUN QUIET DESIGN

WORK HARD WITHOUT SOUNDING LIKE IT

These HP desktops were designed with finely tuned fans to keep systems cool and running quietly.



No throttling



Full performance



System Reliability

Pro 400 Series G9 Desktops



Elite 800 Series G9 Desktops



COMMERCIAL ALL-IN-ONE DESKTOP PC KEY INNOVATIONS







✓ = New in 2022

		EliteOne 840 G9 23.8"	EliteOne 870 G9 27"	ProOne 440 G9 23.8"
HARDWARE	Camera Resolution (5MP) – (Optional IR)	✓	✓	✓
	Camera Resolution (16MP) – (includes IR) ⁸	✓	✓	No
	Optional Color Light Sensor	✓	✓	✓
	Optional Time of Flight Sensor (enables Auto Wake and Lock)	✓	✓	✓
	Camera Interface	Swivel (USB)	Swivel (USB)	Pull-Up (USB)
	Privacy Shutter	✓	✓	✓
	Run Quiet Design	✓	✓	✓
	Extended Range Wireless LAN ¹⁴	✓	✓	✓
	HP Eye Ease ¹⁵	✓	✓	✓
	Wireless Charging Qi	✓	✓	No
	Monitor Mode ³⁰	✓	✓	✓
SOFTWARE	HP AI Noise Reduction 2.0 (HP Presence Enhancement) ^{1,5}	✓	✓	✓
	Backlight Adjustment (HP Presence Enhancement) ^{1,5}	✓	✓	✓
	Lowlight Adjustment (HP Presence Enhancement) ^{1,5}	✓	✓	✓
	Auto Frame (HP Presence Enhancement) ^{1,5}	✓	✓	✓
	Dynamic Voice Leveling ^{1,5,6}	✓	✓	No
	myHP Video Controls GUI	✓	✓	✓
	HP Sound Calibration 2.0 ¹³	✓	✓	✓
	HP Immersive Audio	✓	✓	✓
	Modern Standby	✓	✓	✓
	HP QuickDrop ¹⁶	✓	✓	✓



HP COMMERCIAL DESKTOP PORTFOLIO OVERVIEW



 Pro 200 Series G9 Desktops	 Pro 400 Series G9 Desktops	 Pro 405 Series G8 Desktops	 Elite 600 Series G9 Desktops	 Elite 800 Series G9 Desktops	 Elite 805 Series G8 Desktops
Best value commercial desktop for security, reliability and manageability	Everyday productivity and expandability for your growing business	Everyday productivity and expandability for your growing business	Best value Intel performance and configurability	Our most innovative designs and powerful experiences	Powerhouse performance and enterprise-grade quality and reliability
Mini, Small Form Factor (SFF), Tower, All-in-One	Mini, Small Form Factor (SFF), Tower, All-in-One	Mini, Small Form Factor (SFF)	Mini, Small Form Factor (SFF), Tower	Mini, Small Form Factor (SFF), Tower, All-in-One	Mini, Small Form Factor (SFF)
<ul style="list-style-type: none"> • Good Intel® performance and configurability • Security, reliability, manageability 	<ul style="list-style-type: none"> • Good Intel® performance and configurability • Security, reliability, manageability 	<ul style="list-style-type: none"> • Good AMD® performance and configurability • Security, reliability, manageability 	<ul style="list-style-type: none"> • Good Intel® performance and configurability • Security, reliability, manageability 	<ul style="list-style-type: none"> • Superb Intel® performance • Most configurable • VR graphics¹⁷ • Security, reliability, manageability 	<ul style="list-style-type: none"> • Superb AMD® performance • Highly configurable • VR graphics¹⁷ • Security, reliability, manageability

MARKET SPECTRUM

← Small business

→ Managed IT

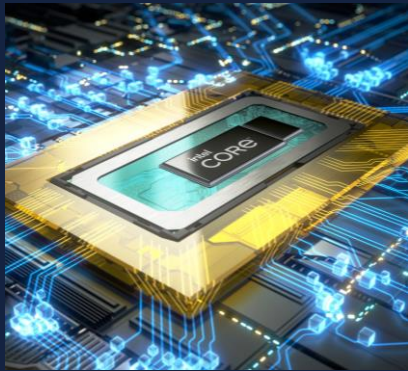


A woman with a braid, wearing a VR headset and holding a controller, stands in a creative studio. The room features a brick wall covered in sketches and photos, a bookshelf, and a window. The scene is dimly lit with a blue tint.

KEY TECHNOLOGY HIGHLIGHT

WORK FROM ANYWHERE WITH INTEL®

12th Generation Intel® Core™ Processors – Architected for A Better End User Experience



Not all compute jobs have same performance expectation. The new core architecture with Intel® Thread Director prioritizes and manages distribution of workloads, optimizing performance per watt. With performance-cores for heavy applications and efficient-cores for multitasking, users are more productive based on how PCs are actually used.

[\(LEARN MORE\)](#)

HP and Intel® equipping businesses of all sizes with the hardware-based computing platform needed to succeed in a rapidly changing digital world.



Select HP desktop products have intel technology for:

- Enhanced chipset
- 10nm architecture
- DDR5 support



Intel® Unique Feature:

- vPro® Enterprise and vPro® Essential^{1,2}
- Intel® Dynamic Tuning Technology
- Intel® Thread Director

Graphical support:

- Additional native graphic ports

Next gen Wi-Fi:

- Wi-Fi 6E³

	800 TWR/SFF	600/400 TWR/SFF	200 TWR/SFF	800 AiO	400 AiO	200 AiO	800/600 DM	400 DM	260 DM
65W DTT	✓								
65W	✓	✓	✓	✓	✓		✓		
35W					✓		✓	✓	
15W (U)						✓			✓

S-Series (35W/65W) powers up to 16 cores and supports Intel Dynamic Tuning Technology (DTT) on 65W TWR form factor to allow for automatic and dynamic allocation of power between an Intel processor and an Intel Discrete Graphics Card to optimize performance and improve battery life

U-Series (15W) powers up to 10 cores in the sleek, space-saving 200 series Mini and All-in-One form factors that enable maximum productivity with a minimal footprint



ADL vPRO¹² OVERVIEW

NEW SOLUTIONS DESIGNED FOR SMB

Growing SMB accounts and modern endpoints bring expanding opportunities to support customer modern manageability with **vPro[®] Essentials solution**, optimized for remote workers – now available on **400s/600s DT ADL** platforms



Customer Segments	CML/RKL	ADL
Managed Enterprise Accounts	vPro [®] Enterprise	vPro [®] Enterprise
Un-managed SMB Accounts Cloud-optimized modern endpoints		vPro [®] Essentials
Generic Business Customers	Non-vPro [®]	Non-vPro [®]

Platforms	800s	600s	400s
vPro [®] Enterprise*	Default	Option	Option
vPro [®] Essentials*	-	Option	Option**
NON-vPro [®]	-	Default	Default

*For vPro Enterprise/vPro essential: Garfield Peak 2 (Intel WLAN card) must be selected if WLAN is configured

**vPro Essentials is available in select markets for 400 series



vPRO[®] ENTERPRISE VS. vPRO[®] ESSENTIALS

	MANAGEABILITY	SECURITY	STABILITY
vPro[®] ENTERPRISE	<p>Intel[®] Active Management Technology (AMT)²⁶ Provides full remote management and control capabilities</p> <ul style="list-style-type: none"> • Remote Configuration • Out-of-band management • Full remote erase and recovery • Full remote KVM (keyboard, video, mouse) 	<p>Intel[®] Hardware Shield HP Sure Start²² Provides Enhanced Security</p> <ul style="list-style-type: none"> • Intel[®] Hardware shield silicon components are leveraged to offer and enhance HP Sure Start Runtime Intrusion Detection • HP Sure Start builds on Intel's security tools with additional capabilities 	<p>Intel[®] Stable IT Platform Program (SIPP) No hardware changes for at least 15 months or until the next generational release</p>
vPro[®] ESSENTIALS*¹²	<p>Intel[®] Standard Manageability Enables remote configuration and the ability to remotely access and manage devices that are crashed or powered down</p> <ul style="list-style-type: none"> • Remote configuration • Out-of-band management 	<p>Intel[®] Hardware Shield HP Sure Start Provides Enhanced Security</p> <ul style="list-style-type: none"> • Intel[®] Hardware shield silicon components are leveraged to offer and enhance HP Sure Start Runtime Intrusion Detection • HP Sure Start builds on Intel's security tools with additional capabilities • With HP Sure Start customers can get the same level of security protection with vPro[®] Enterprise or Essentials¹² 	<p>SIPP not available</p>



WHY TRANSITION TO WINDOWS 11

THE BEST HYBRID EXPERIENCES ARE ON A NEW PC

1 NEW PC HARDWARE BEST SHOWCASES THE BENEFITS OF WIN11

- More new PCs have touch and pen options to use with the new UI
- Docking is better on a new PC (USB4)
- New PCs have higher resolution panels

2 NEW PCS HAVE THE TECHNOLOGY NEEDED FOR SUCCESSFUL HYBRID WORK

- HP Presence¹: Users value better collaboration features such as 5MP camera, enhanced mics
- Better connectivity with Wi-Fi 6E³
- Best performance: with latest CPUs with DDR5 on premium platforms

3 WIN 11 + ADL CAMPAIGN SHOULD BE FOCUSED ON DRIVING HW REFRESH

- Best end user experiences
- Best ITDM experiences
- Best security



NEXT-GEN MEMORY

THAT FUELS SPEED & EFFICIENCY

OPPORTUNITY

- Leverage DDR5 memory where performance / Energy savings is important based on use cases & pricing flexibility

DDR5 OFFERS:

- Lower power consumption
- Faster performance
- Reliability and resiliency improvement

INDUSTRY-
WIDE
TRANSITION
TO DDR5

2022 platforms offer a broad range of flexible memory configurations:

- Single or Dual channel¹⁹ options (upgradeability & performance)
- DDR4 for more competitive pricing (400 series)
- DDR5 for latest technology and maximum performance (800/600)

NEXT-GEN GRAPHICS

THAT EVOLVES PC EXPERIENCE

OPPORTUNITY

- Offer RTX graphics where performance matters based on use cases & pricing flexibility

RTX GRAPHICS OFFERS:

- Studio level creation experience
- Next-gen performance based on Deep Learning and Ray tracing
- NVIDIA Broadcast, AI-powered collaboration tool

2022 platforms offer a broad range of flexible GFX configurations:

- High-end Graphics for creation & VR¹⁷
- Entry & Mid-tier Graphics for light creation & display extension
- Professional grade GFX for max reliability





2022 PRODUCT CHANGES AND ROADMAP

2022 PORTFOLIO

STEP UP PATH

HP 200 G9 Series



Reliable entry-level desktops for essential computing

- Latest processor technology
- Essential business features

PRO 400 G9 Series



+ Configurable desktops and all-in-ones for your growing business

- Security and manageability for growing business (+HP Sure Start²²)
- Manageability through Intel vPro^{®12} options
- Higher level of MIL-STD durability²³

ELITE 600 G9 Series



+ Essential enterprise features; ready for versatile workspaces

- Enterprise Essentials
- Better expandability
- Global series

ELITE 800 G9 Series



+ Innovative designs and powerful experiences for hybrid work

- Enhanced collaboration features (AiO)
- Run Quiet Design 2.0
- Modern Stand-by
- HP Auto Lock and Awake²⁴ (AiO)
- Most compute power (TWR)




EXPERIENCE UPGRADES

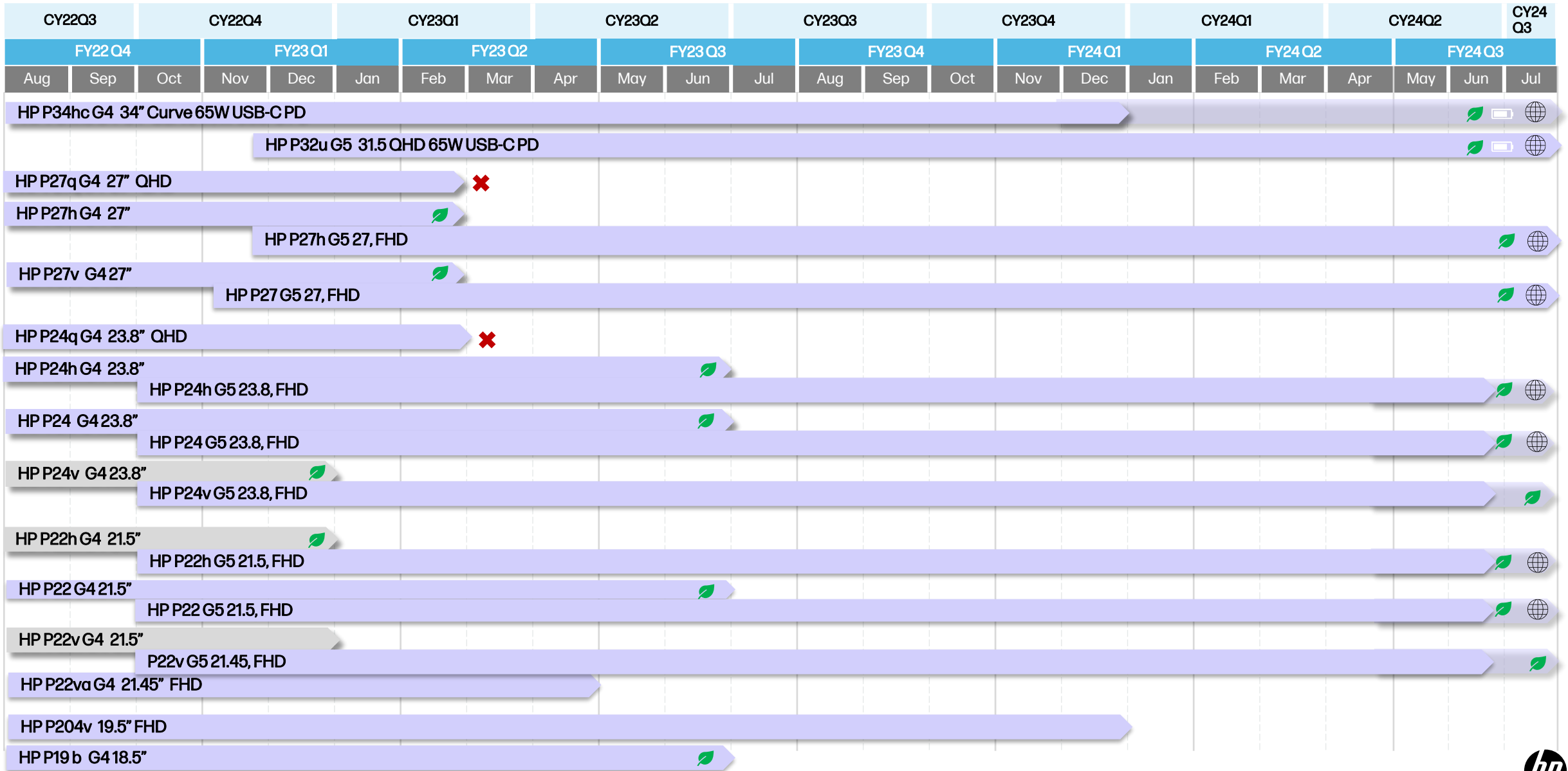
HARDWARE UPGRADES

	HP 200 G9 Series	PRO 400 G9 Series	ELITE 600 G9 Series	ELITE 800 G9 Series
AiO	23.8" / 21.5" 5MP Camera Intel ^{®18} / AMD ^{®25}	23.8" 5MP Camera Optional Gfx	--	27" / 23.8" HP Presence ¹ 5MP, 16MP Camera ⁸ Optional Gfx
Mini	1x PCIe Gen4 15W Processor	1x PCIe Gen4 35W Processor	2x PCIe Gen4 65W/35W Processor	2x PCIe Gen4 65W/35W Processor Optional nVidia RTX 3050 Ti
Tower	3 Bay / 3 Slot 2x DDR4 Intel [®] / AMD [®]	3 Bay / 4 Slot 2x DDR4 Up to 400W PSU	4 Bay / 4 Slot 4x DDR5 Up to 550W PSU	4 Bay / 4 Slot 4x DDR5 Up to 550W PSU
SFF	2 Bay / 2 Slot 2x DDR4	2 Bay / 2 Slot 2x DDR4	4 Bay / 4 Slot 2x DDR5	4 Bay / 4 Slot 2x DDR5
All FF		Optional vPro [®] / vPro [®] Essentials ¹²	Optional vPro [®] / vPro [®] Essentials ¹²	vPro [®] Standard ¹²



P-Series

-  Global Product Offer
-  Power Delivery
-  Fiber Packaging



INNOVATIONS THAT POWER

THE NEW EXPERIENCES FOR HYBRID WORK



2022 PORTFOLIO

YOUR BEST HYBRID WORK IS ON AN HP NOTEBOOK

REFRESH



REFRESH



NEW ID



NEW ID



NEW ID



16:10 DISPLAY

3:2 DISPLAY

ProBook
400 & 405 Series G9



EliteBook
600 & 605 Series G9



EliteBook
800 & 805 Series G9



EliteBook
1000 Series G9



EliteBook
Dragonfly



Modern Design for growing companies
Performance for DT Transitions

Bringing Premium to all employees
Secure & Manage remote + local
Performance for DT Transitions
Configurability & Flexibility

The gold standard for corporate
Enhanced Collaboration
Robust Connectivity

Redefining the lightweight
corporate standard
Enhanced Collaboration
Contextual experiences

Form factor innovation
Industry-leading weight thresholds
Life-like collaboration, everywhere

Clamshell, x360

Clamshell

Clamshell, x360

Clamshell, x360

Clamshell

Intel®
• P28 Higher TDP

ALL
• Increased Security (HP Wolf Security for Business⁴⁰)
Intel®
• P28 Higher TDP (14" & 15")
AMD®
• New AMD Lineup with Full AMD DASH/KVM Support -14" & 15"

ALL
• 16:10
• 16" (replacing 15")
Intel®
• P28 Higher TDP (14" & 16")

• ALL: 16:10
• Starting at 2.5 lbs
• Contextual experiences

• 13.5", 3:2, Magnesium Clamshell (New 1kg⁷⁰ platform)

Home / Office Navigator

Home / Office Navigator

Home / Office Navigator

Mobile Trailblazer

Mobile Trailblazer





DURABLE CONSTRUCTION

BUILT TO LAST

UNDERGOES
19

**MIL-STD 810H
TESTS⁴⁹**

120k
HOURS

**HP TOTAL TEST
PROCESS³⁵**

The challenge of building thin, light, and powerful is to remember where this device will be used – in a mobile environment – a *moving* environment.

Quality cannot be sacrificed.



2022 COMMERCIAL NOTEBOOKS

KEY CHANGES & INNOVATIONS

	PROCESSOR	CHASSIS	PANELS	MEMORY	WEBCAM
Dragonfly	Intel ADL U15	New	3:2	LPDDR5	5MP with wide field of view
1000 Series	Intel ADL U15	New	16:10	DDR5	5MP with wide field of view
800 Series	Intel ADL U15/P28*	New	16:10	DDR5	5MP with wide field of view
805 Series	AMD REMBRANDT 15W/28W	New	16:10	DDR5	5MP with wide field of view
600 Series	Intel ADL U15/P28	Cover A Change. (Elite branding)	Same (Sure View no longer offered in 15").	Same (DDR4)	720p HD with temporal noise reduction
605 Series	AMD BARCELO	New platform based on 600 chassis	New platform with same options as 600	DDR4	720p HD with temporal noise reduction
400 Series	ADL U15/P28*	Same	Same (Sure View no longer offered in 15")	Same (DDR4)	720p HD with temporal noise reduction
405 Series	AMD BARCELO	Same	Same (Sure View no longer offered in 15")	Same (DDR4)	720p HD with temporal noise reduction
200 Series	ADL U15/P28	Same	New 400 and 300 nit options	Same (DDR4) Up to 32GB	720p HD with temporal noise reduction
205 Series	AMD BARCELO	Same	New 400 and 300 nit options	Same (DDR4) Up to 32GB	720p HD with temporal noise reduction

* = ADL P28 not available on 13"



PANEL AND ASPECT RATIO EVOLUTION

Productivity boost with bigger displays, trackpads & keyboards

Lead in premium with this panel shift to provide improved productivity

+ 7% MORE VERTICAL SPACE*



+ 11% MORE VERTICAL SPACE*



16:9

ALL G8 PLATFORMS
+ PROBOOK 400/ELITEBOOK 600 G9

16:10

ELITE 1000 & 800 G9 SERIES

3:2

ELITE DRAGONFLY G3

The market is shifting to a modern design with a more efficient aspect ratio with productivity benefits

- More vertical real estate
- Display closer to eye level
- Larger clickpad and keyboard
- Eye Ease^{T7} low blue light option (400 nit and above)

- Best for highly mobile users
- View more, scroll less
- Higher position of integrated webcam
- Larger clickpad, keyboard and battery
- Eye Ease^{T7} low blue light on all panels^{T9}

*Compared to 13.3" 16:9



2022 COMMERCIAL NOTEBOOKS

KEY VIDEO INNOVATIONS

	Elite Dragonfly G3	EliteBook 1000 G9	EliteBook 800 G9	ProBook 400 EliteBook 600 G9	
HARDWARE	Camera Resolution	✓ (5MP)	✓ (5MP)	✓ (5MP)	HD
	Camera Interface	✓ (MIPI)	USB	USB	USB
	Temporal Noise Reduction (TNR)				✓
SOFTWARE ^{††}	Super Resolution				✓
	Backlight Adjustment	✓	✓	✓	✓
	Lowlight Adjustment	✓	✓	✓	✓
	Auto Frame	✓	✓	✓	
	Eye Contact	✓			
	Appearance Filter	✓			
	Background Adjustment	✓			
	myHP Video Controls GUI	✓	✓	✓	✓

✓ = New in 2022



BRING AUTHENTICITY TO EVERY MEETING

With a 5MP camera⁴⁴ that keeps you looking sharp



.92MP (HD)

5MP



Lower resolution

More blurry

Less crisp

Higher resolution

Less blurry

More crisp

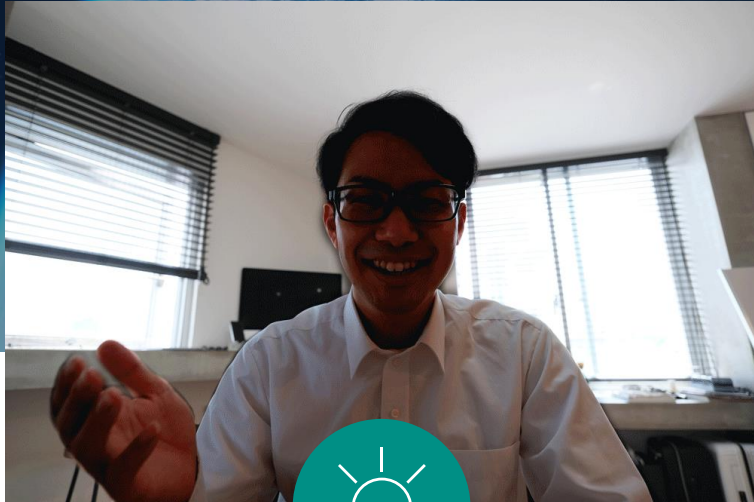
Capture more detail with

5x

more pixels than an HD camera⁵⁴



NO MATTER WHERE OR WHEN YOU'RE WORKING BE SEEN IN YOUR BEST LIGHT



AVOID OVEREXPOSURE

Backlight WDR⁴ uses quality dual image sensors, working together to balance the background and foreground lighting and contrast.



BRIGHTEN DARK ROOMS

Low light Improvement⁴ detects if the room is too dark and automatically brightens the image to give you vibrant image quality

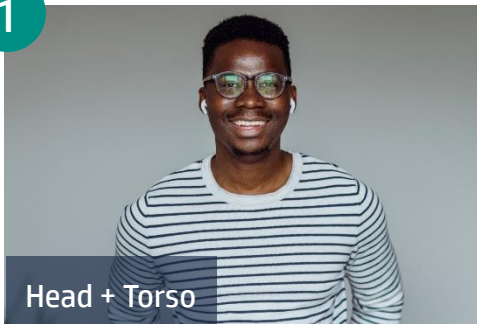
Your camera sees what's going on in the room and automatically adjusts for optimal video.

BREAK FREE FROM YOUR DESK

With HP Auto Frame³⁸

You choose what view you share:

1



Head + Torso

2



Head + Shoulders

3



Head Only

Your meeting moves
with you, keeping
you front and center.

“I can move
around and still
be clear, in-focus,
and centered in
the video frame.”



2022 COMMERCIAL NOTEBOOKS

KEY AUDIO INNOVATIONS

		Elite Dragonfly G3	EliteBook 1000 G9	EliteBook 800 G9	ProBook 400 EliteBook 600 G9
HARDWARE	Sound Pressure Level	≥78 db	≥74 db	≥74 db	≥70 db
	Bass Rolloff (lower is better)	≤ 200Hz	≤ 350Hz	≤ 350Hz	≤ 600Hz
	Microphones	✓ (Top Edge, 2)	Front (2)	Front (2)	Front (2)
	Speakers	4	✓ (2)	✓ (2)	✓ (2)
	Discrete Amplifiers	Yes (4)	✓ (2)	✓ (2)	(integrated AMP only)
	Frequency Optimized Speakers	✓			
	Directional Firing Speakers	✓ (Front/Down)	✓ Side/Down	✓ Side/Down	Top
SOFTWARE	HP Dynamic Voice Leveling ^{T1}	✓	✓	✓	
	HP AI Noise Reduction 2.0 ^{T1} with HP Clear Voice	✓	✓	✓	✓
	HP Dynamic Audio ^{T10}	✓	✓	✓	✓
	HP Sound Calibration ^{T11}	✓	✓	✓	✓

✓ = New in 2022



STAND UP AND BE HEARD



HP Dynamic Voice Leveling⁴

**Walk and talk. Stand and stretch.
Your PC will still hear your voice.**

HP Dynamic Voice Leveling⁷ automatically enhances microphone gain to optimize voice clarity within 3 meters of the PC.

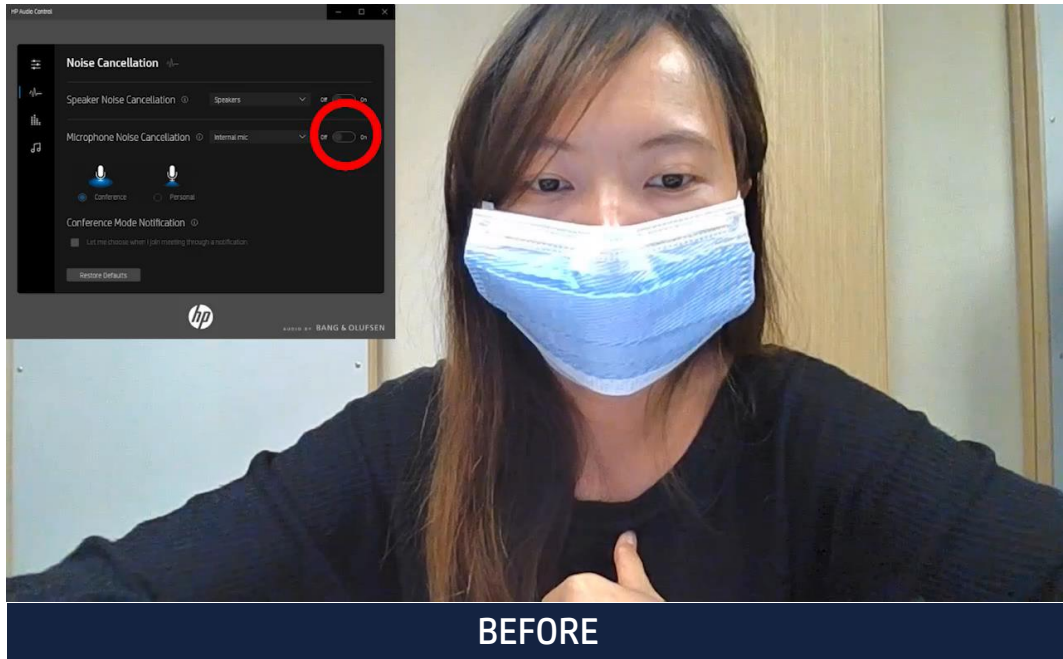


3m pickup range

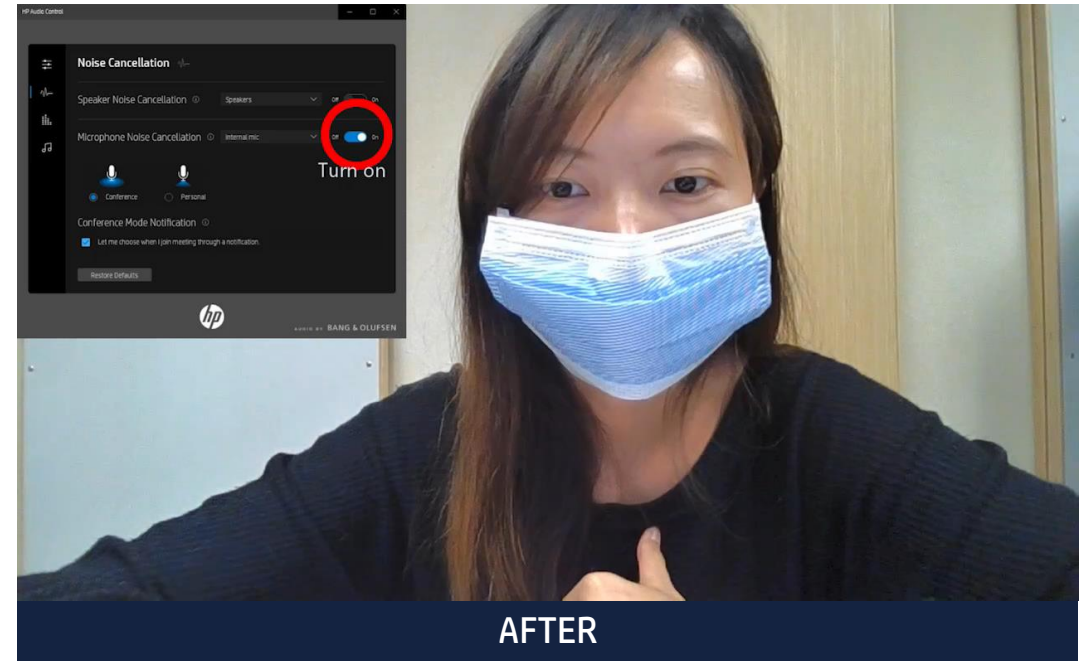


BE HEARD LOUD AND CLEAR

With HP AI-based noise reduction 2.0⁴



People say I sound muffled on conference calls when I'm wearing a mask.



People can hear me clearly even when I'm wearing a mask.



FILTERS INBOUND & OUTBOUND NOISE

AI-based advanced noise reduction filters my background noise and yours for an enhanced conference call experience.



EXPERIENCE IMMERSIVE, PREMIUM AUDIO



SOUND TAILORED TO YOU

Tune your headphone audio for an immersive sound experience tailored specifically to your preferences with HP Sound Calibration.³⁷



HEAR WHAT'S IMPORTANT

HP Dynamic Audio, a new AI-based audio experience, tunes output to speech, music, and movies all while suppressing background noise.¹³



REMARKABLE SOUND

Audio by Bang & Olufsen, four top-firing speakers, and four discrete amps work together to create an immersive sound that comes through crystal clear whether you're on a conference call or watching a movie.



BETTER, FASTER CONNECTION TO YOUR WORK



ELITEBOOK DRAGONFLY, 1000 & 800 SERIES

- Support for 4x4 antenna for 5G^{T12}
- Higher bandwidth
- Access to a secure network
- Constant availability of a private network



FROM 400 THROUGH 1000 SERIES^{T13}

- Future proof, next-gen technology
- Speedier internet with less congestion 6GHz band
- More devices can share single network without lag

5G

is foreseen as the
fastest growing
technology in this
decade

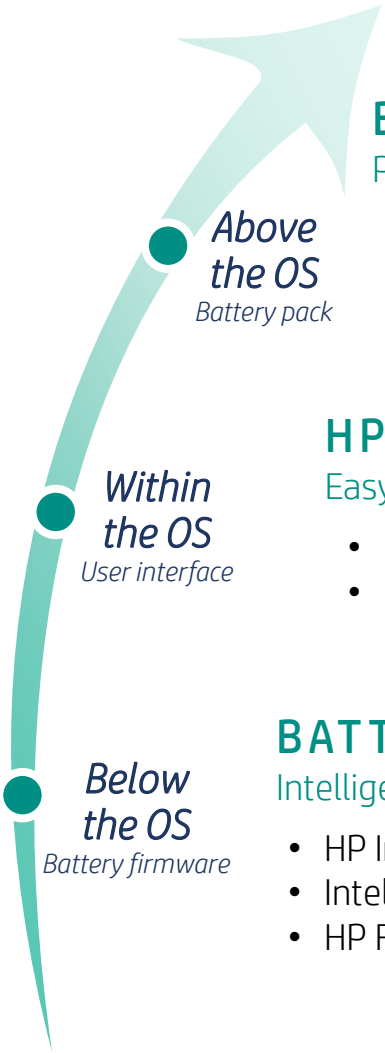
Wired ethernet
connections are
being **fully replaced**
by wireless
solutions

OPPORTUNITIES

- Broaden adoption of 5G across premium portfolio
- Future-proof with next generation of Wi-Fi with 6E



INTELLIGENT BATTERY FOR HYBRID WORK



*Above
the OS*
Battery pack

BATTERY SHIELD^{T14}

Peace of mind with stronger battery pack protection

- Metal plate around battery pack to protect from external damage caused during daily usage, drop, battery service, logistics.

*Within
the OS*
User interface

HP POWER MANAGER^{T15}

Easy Battery Management

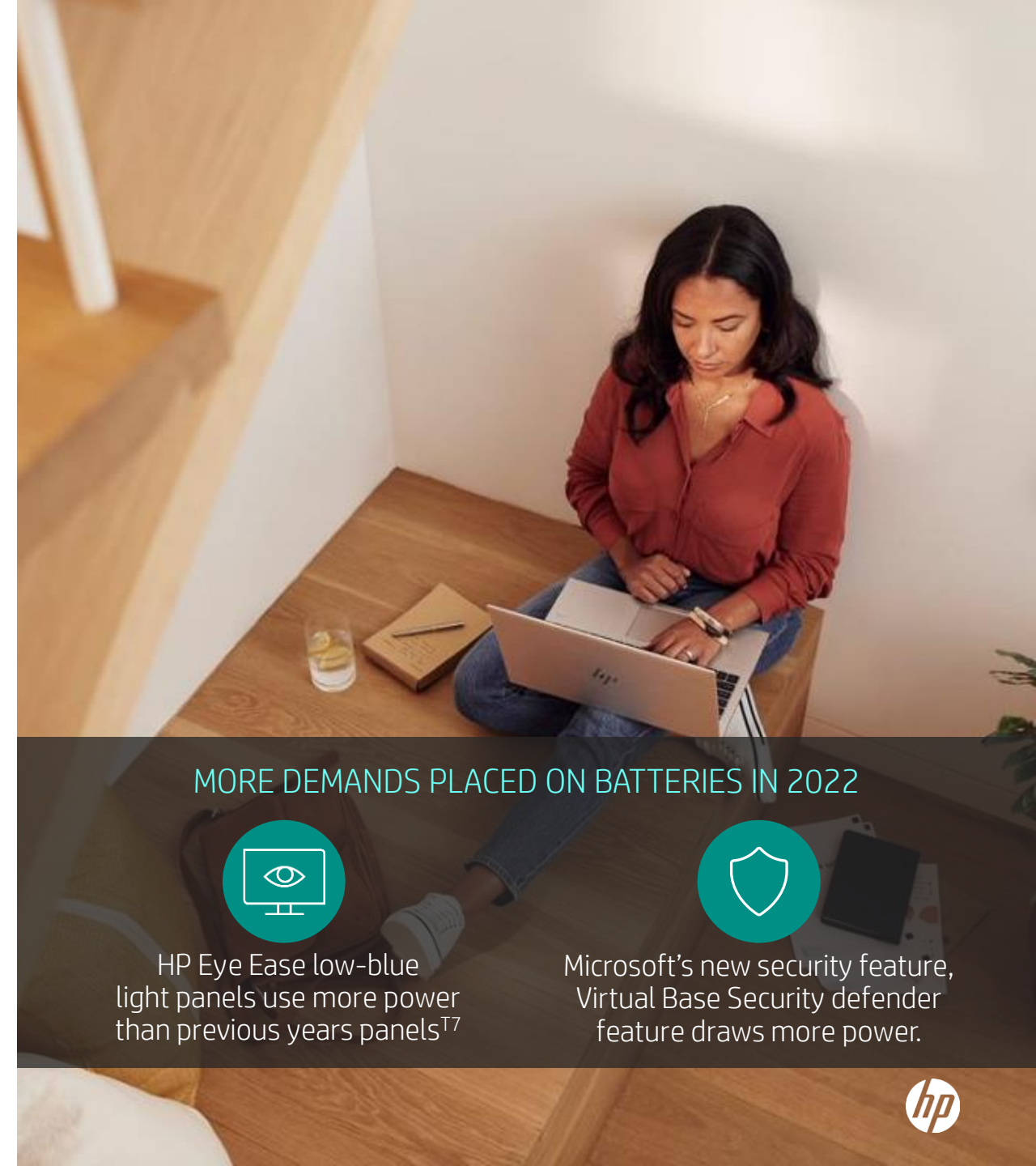
- My Battery Status
- Battery Charge Manager

*Below
the OS*
Battery firmware

BATTERY HEALTH MANAGER 3.0^{T24}

Intelligent battery with AI

- HP Intelligent Charging algorithm prevents battery swelling
- Intelligent Charging Scheduler
- HP Fast Charge Plus^{T16}



MORE DEMANDS PLACED ON BATTERIES IN 2022



HP Eye Ease low-blue light panels use more power than previous years panels^{T7}



Microsoft's new security feature, Virtual Base Security defender feature draws more power.



NEXT-GEN MEMORY

THAT FUELS SPEED & EFFICIENCY

DDR5 memory offers

- 50% higher bandwidth for a faster and more responsive PC
- Dual channel DIMM architecture for more efficient access and better signal integrity
- On-die Error Correction Code removes burden on the CPU, increasing overall system efficiency
- Lower power consumption for better battery life
 - LPDDR5 has lowest power consumption

DDR5 supported on: EliteBook 800/805/1000 G9

LPDDR5 supported on: Dragonfly G3

INDUSTRY-
WIDE
TRANSITION
TO DDR5

2022 platforms offer a broad range of flexible memory configurations:

- **Single or Dual channel options** (choose upgradeability or maximum performance)
- **DDR4** for more competitive pricing
- **DDR5** for latest technology and maximum performance
- **LPDDR5** for lowest power consumption yet maximum performance



EXPANDED INTEL PROCESSOR OPTIONS

Intel 12th Gen processors feature a new architecture

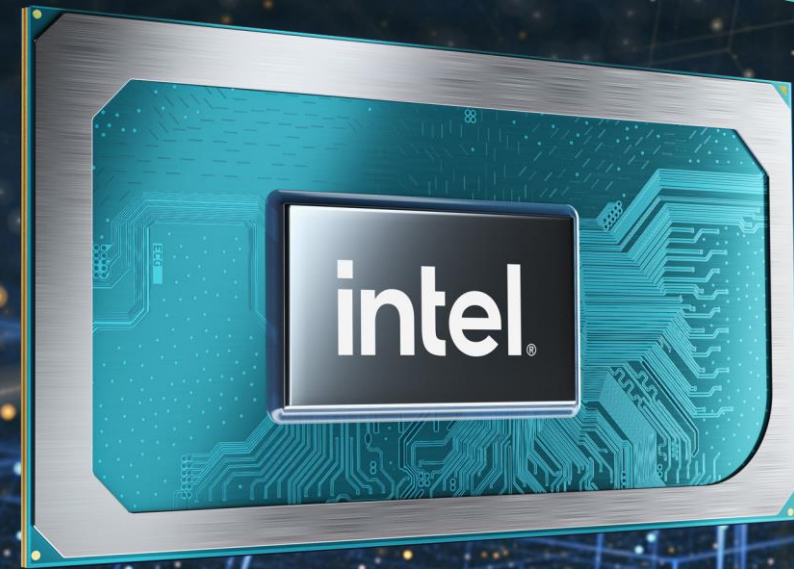
Two types of cores - Performance Cores for demanding tasks and Efficient Cores for background tasks. Intel Thread Director routes workloads to the best cores for the job

Intel 12th Gen now offers two levels of processors

P28 is better for home office navigators who are constantly multitasking and need *more power* to work with more complex files and data sets. Also provides discrete graphics power without the discrete card in a quieter and cooler device.

U15 – is best suited for thinnest & lightest designs with an emphasis on *mobility & battery life* instead of raw power.

HYBRID WORK
COMPUTING
DEMANDS MORE
POWER



	Dragonfly Series	1000 Series	800 Series	600 Series	400 Series	200 Series
U15	✓	✓	✓	✓	✓	✓
P28			✓ except 13"	✓ except 13"	✓	✓



From Year of the Upgrade to Year of the Refresh



2022: Year of the Upgrade

- **Broadest portfolio redesign** for hybrid & investment in premium experiences
- **Portfolio simplifications** to maximize investment ROI and x-leverage
- **Protect RFPs** by extending specific N-1 offerings (X2, 430)
- **Invest in AMD** for CEP/FED

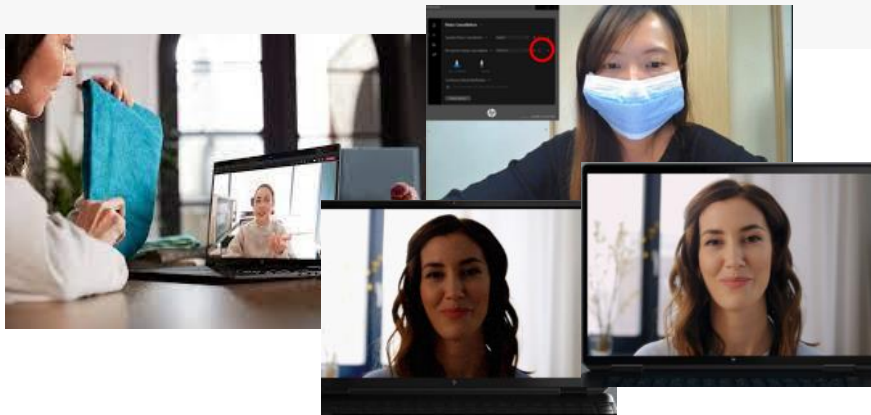


2023: Year of the Refresh

- **Refresh technology** for broader portfolio to stay competitive
- **Capitalize on existing product** by introducing new experiences & bringing premium experiences into mainstream
- **Continual cost optimization** and new lower cost options
- **Adapt to market challenges** with cost-aggressive SKUs

Delivering Experiences to Power Hybrid Work

Inclusive Collaboration



be seen and be heard with intelligent conferencing

5MP cameras with HP Auto Frame^{T1}
Updated audio AI • Discrete amps



Enhanced collaboration with HP Presence 2.0

Premium 88° Wide Field of View •
5MP to mainstream •
Multi-camera streams⁸

Seamless Transitions



context & place aware with adaptive connectivity and performance

5G • Wi-Fi 6E • DDR5 • Context Aware^{T8}
Sure Recover • HP Auto Lock and Awake^{T3}



More freedom with performance, connectivity & security

5G⁷ & WiFi6E (AMD)¹⁰ • 32 GB LPDDR5 (thin & light)
HP Context Aware^{T8}: Lap detection

Personalization



make space for productivity and well being in the “anywhere” office

16:10 aspect ratios • HP Eye Ease^{T7}
larger keyboard & clickpad



More productivity power to shape your experience

Intelligent Hibernate
OLED Power Saving & image quality
Improved cool & quiet experience

2022

NEW 2023



SECURED & MANAGED FROM EVERYWHERE

2023 Key Changes & Innovations

YEAR OF THE
REFRESH

	PROCESSOR	CHASSIS	PANELS	MEMORY	WEBCAM
Dragonfly	Intel RPL U15	Same	3:2	LPDDR5	5MP with 88° field of view
1000 Series	Intel RPL U15/P28*	Same	16:10 (super high res, 2560x1600)	DDR5/ LPDDR5(x360)	5MP with 88° field of view
800 Series	Intel RPL U15/P28*	Same	16:10 (super high res, 2560x1600 & OLED in 860)	DDR5/ LPDDR5(830, X360)	5MP with 88° field of view
805 Series	AMD Phoenix 15W/28W	Same	16:10 (super high res, 2560x1600 & OLED in 865)	DDR5/ LPDDR5(835)	5MP with 88° field of view
600 Series	Intel RPL U15/P28*	2x USBC	Same (16:9) adding Low Blue Light** (Sure View no longer offered in 15")	Same (DDR4)	720 HD, HD + IR, 5MP+ IR* (not available in 630)
605 Series	AMD Barcelo-R	Same	Same (16:9) adding Low Blue Light (Sure View no longer offered in 15")	Same (DDR4)	720 HD, HD + IR, 5MP+ IR*
400 Series	Intel RPL U15/P28	2x USBC	Same (16:9) adding Low Blue Light (Sure View no longer offered)	Same (DDR4)	720 HD, 5MP+ IR*
405 Series	AMD Barcelo-R	Same	Same (16:9) adding Low Blue Light (Sure View no longer offered)	Same (DDR4)	720 HD, 5MP+ IR*
200 Series	Intel RPL U15/P28 ADL-N	New ID	Same (16:9) New 400 and 300 nit options	Same (DDR4) Up to 32GB	720p HD with temporal noise reduction
205 Series	AMD Barcelo-R/ Mendocino	New ID	Same (16:9) New 400 and 300 nit options	Same (DDR4) / LPDDR5(Mendocino) Up to 32GB	720p HD with temporal noise reduction

* = ADL P28 NOT available on 13 & x360" ** = NOT available on 630

HP Confidential. For HP and Partner use with Customers under HP CDA only.

*optional



An intelligent battery that is optimized for hybrid work

Longer Life

Battery Health Manager

Battery Health Manager with Intelligent Charging algorithm enables efficient power use and extends the useful life of the battery throughout PC lifecycle ^{12 T24}

Enhanced Safety

HP Battery Shield 2.0

New physical protection for 38Wh battery offers stronger protection at a lighter weight versus metal-based Battery Shield ^{T14}

New for 2023

Intelligent Hibernate

Works with Intelligent Charging Scheduler to place PC in hibernation to reduce stand-by battery consumption during idle use

New for 2023

OLED Power Saving Mode

Enjoy a premium display experience with less strain on battery life



2023 Key Intelligent Features

	Elite Dragonfly G4	EliteBook 1000 G10	EliteBook 800 G10	EliteBook 600 G10	ProBook 400 G10
Auto Lock & Awake	✓	✓			
Context Aware: On lap/On table mode	✓	✓			
Context Aware: In/Out of bag	✓	✓			
Auto Brightness (ALS)	✓	✓	✓		
Adaptive Color (ACS)	✓	✓	✓		
Wake on Touch (tablet mode x360 only)		✓	✓		✓ (405)
Intelligent Hibernate	✓	✓			
System Control	✓	✓			
Smart Sense	✓	✓ (P28 Intel EPO)	✓ (P28 Intel EPO)		
Intel Connectivity Performance Suite (ICPS) - For select Intel Evo platforms	✓	✓	✓	✓	
HP Battery Shield 2.0 (SET)	✓	✓	✓		
OLED Power Saving	✓				

Latest-gen memory that fuels speed & efficiency

DDR4 for best value

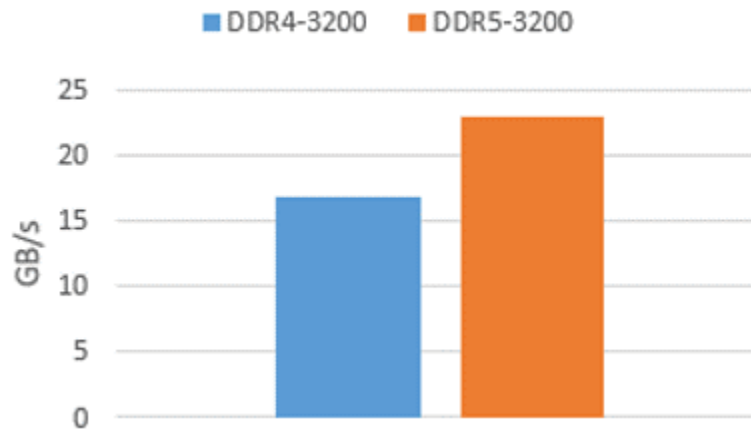
DDR5 for latest technology, lower power consumption for more efficient use of battery power and high performance

LPDDR5 for lowest power consumption for most efficient use of battery power and maximum performance



DDR4 3200 vs DDR5 3200

Effective bandwidth^{T29}

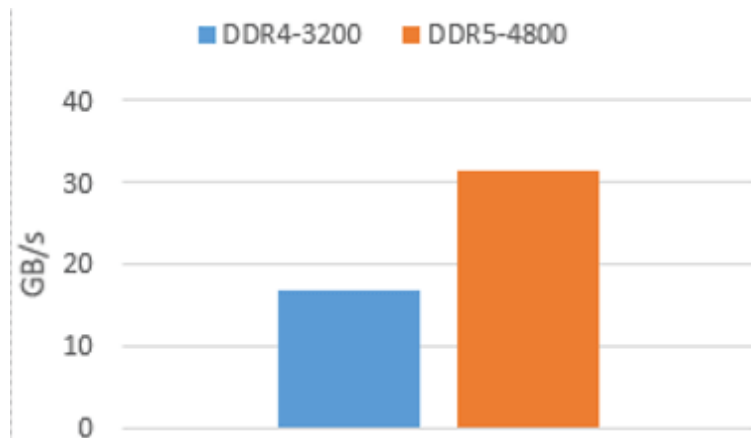


1.36x

more bandwidth with DDR5

DDR4 3200 vs DDR5 4800

Effective bandwidth¹



1.87x

more bandwidth with DDR5 4800

Understanding DDR4, DDR5 & LPDDR5

DDR4



+



50% higher bandwidth for a faster & more responsive PC¹

+



Better for graphics, multi-tasking, high-performance apps

+



Lower power consumption for longer battery life

+



Overall system efficiency by removing burden on the CPU

= DDR5



+

Further improvement to battery life, graphics and performance

= LPDDR5



Small form factors require soldered memory that is not upgradeable



32GB capacity onboard is only available with LPDDR5 in 2023

Premium Memory Offerings



Memory Offerings	Dragonfly Folio G3		Dragonfly G3 (clamshell)		1040 (clamshell)		x360 1040 x360 830		830/835 (clamshell)		840/860 (clamshell)	
	G3		G3	G4	G9	G10	G9	G10	G9	G10*	G9	G10
8GB LPDDR5	✓	✗	✓	✓				✓		✓		
16GB LPDDR5	✓	✗	✓	✓				✓		✓		
32GB LPDDR5	✓	✗	✓	✓			—	✓		✓		
8GB DDR5					✓	✓	✓		✓		✓	✓
16GB DDR5					✓	✓	✓		✓		✓	✓
32GB DDR5					✓	✓	—		—		✓	✓
64GB DDR5					✓	✓	—		—		✓	✓
16GB DDR4											✓ (ADL)	
32GB DDR4 (2x16GB)											✓ (ADL)	



Memory option not serviceable or upgradable

HP Dock Manageability Features



Features	HP USB-C G5 Essential Dock	HP USB-C G5 Dock	HP USB-C/A G2 Universal Dock	HP Thunderbolt G4 Dock
Firmware Update	Connected ^{T32}	Disconnected ^{T39}	Disconnected ^{T39}	Disconnected ^{T39}
PXE Boot ⁹	√	√	√	√
OOB Wake on LAN	-	√	√	√
MAC Address Pass-Through	√ ^{T34}	√	√	√
eTag	-	√	√	√
Disable LAN	-	√	√	√
Secure FW Update ¹²	-	-	-	√
Event Messaging	-	√	√	√
LAN/WLAN Switching	√	√	√	√
Wired vPro	-	-	-	√

2023 Portfolio

Step Up Path

HP 200/205 G10

NEW ID



Stay connected with Powerful technology

- Latest processor technology
- Essential business features

ProBook 400/405 G10

REFRESH



Affordable devices designed with commercial grade feature; durable design

- + Aluminum A/C chassis
- HP Sure Run & Sure Recover
- Higher level of MIL-STD durability
- Two multifunction USB-C (Intel only)

EliteBook 600/605 G10

REFRESH



Bringing premium to all employees across all hybrid workstyles. Enterprise security and manageability. Configurability & flexibility.

- + Management w/ Intel vPro & vPro Essentials/AMD DASH
- Smart card / NFC option
- Up to 64GB DDR4 / 2TB SSD
- Thunderbolt™ (Intel only)
- Global series

EliteBook 800/805 G10

REFRESH



Gold standard for enterprise, setting the bar with performance, connectivity, collaboration.

- + Enhanced collaboration
- Enhanced audio & discrete amps
- 5G connectivity
- Ambient light & color sensors
- Embedded Sure Recover
- HP Auto Lock and Awake
- HP Context Aware (Intel only)
- QHD+ OLED panel option

EliteBook 1000 G10

REFRESH



Ultra lightweight devices for the freedom to work and truly collaborate from anywhere.

- + Super light weight
- Intelligent Hibernate

Dragonfly G4

REFRESH



Best collaboration and productivity experiences in a lightweight, beautifully designed, secure device.

- + Lightest and thinnest
- Quad Speakers
- Top Edge Mics
- OLED panel option and power saving mode

EXPERIENCE UPGRADES

HARDWARE UPGRADES

14"/15" Plastic chassis, Opt metal A cover, Clamshell	14"/15" Aluminum A/C covers Clamshell & x360	13/14/15" Aluminum A/C/D covers Clamshell	13/14/16" All aluminum chassis Clamshell & x360	14" Magnesium chassis Clamshell & x360	13.5" Magnesium chassis Clamshell
Intel and AMD 15W /28W (Intel only)	Intel and AMD -15W 28W (intel only)	Intel and AMD 15W 28W(Intel only)	Intel and AMD 15W 28W	Intel 15W 28W	Intel 15W
16:9 Display	16:9 Display	16:9 Display	16:10 Display	16:10 Display	3:2 Display
HD TNR Camera	HD TNR or 5MP Camera	HD TNR or 5MP Camera	5MP Camera 88° FOV	5MP Camera 88° FOV	5MP MIPI Camera 88° FOV
DDR4 Memory	DDR4 Memory	DDR4 Memory	DDR5/LPDDR5 Memory	DDR5/LPDDR5 Memory	LPDDR5 Memory
Wi-Fi 6 WLAN	Wi-Fi 6E WLAN / 4G WWAN	Wi-Fi 6E WLAN / 4G WWAN	Wi-Fi 6E WLAN / 5G WWAN	Wi-Fi 6E WLAN / 5G WWAN	Wi-Fi 6E WLAN / 5G WWAN

HP ELITEBOOK SERIES G9

PRIVACY & SECURITY



SECURITY BY DEFAULT

WINDOWS 11 DELIVERS POWERFUL
PROTECTION FROM CHIP TO CLOUD

In Windows 11, hardware and software security work together to help keep users, data, and devices protected.

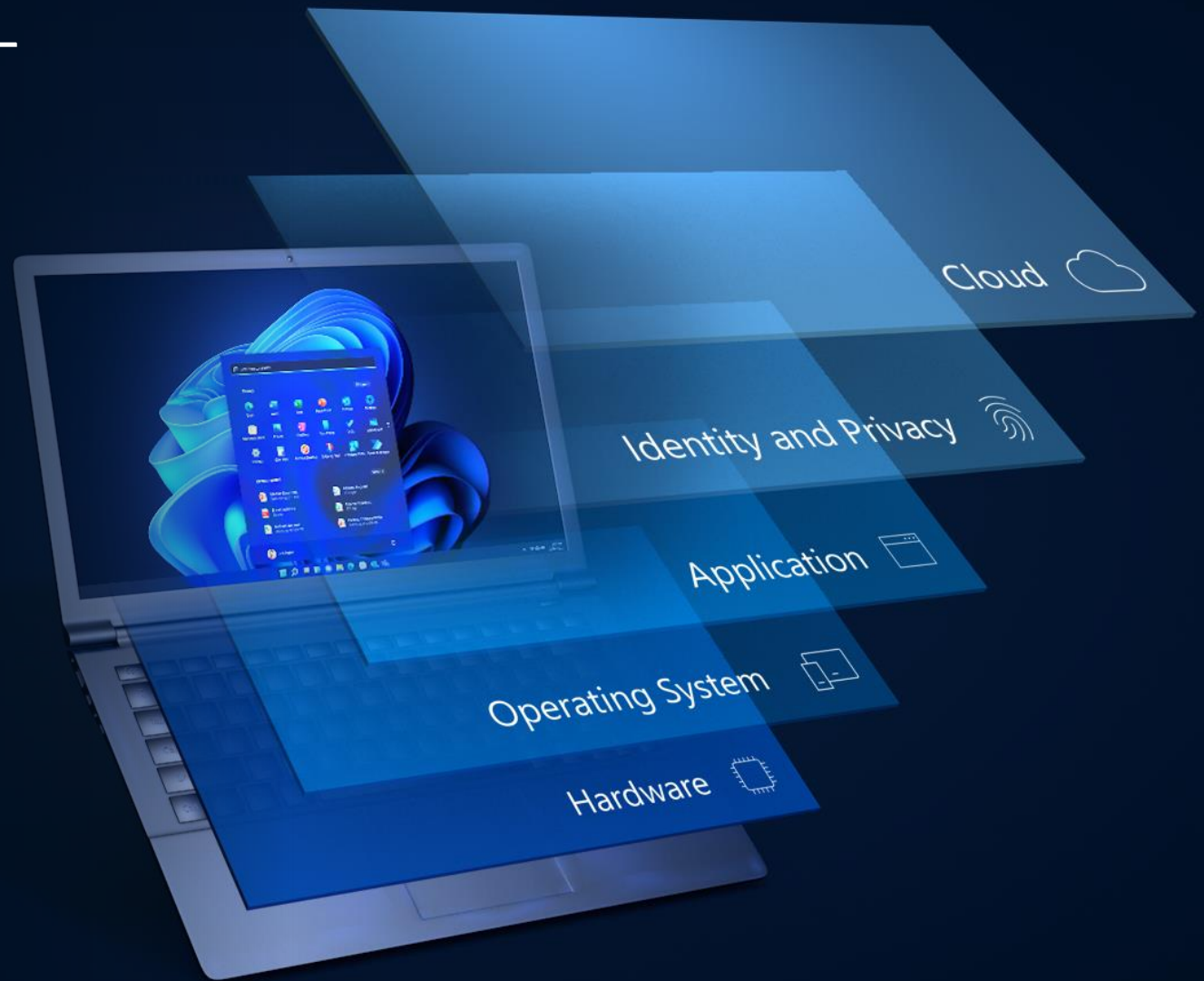
Protects against threats by separating hardware from software with hardware root-of-trust, for powerful security from the start

Protect the OS against unauthorized access to critical data

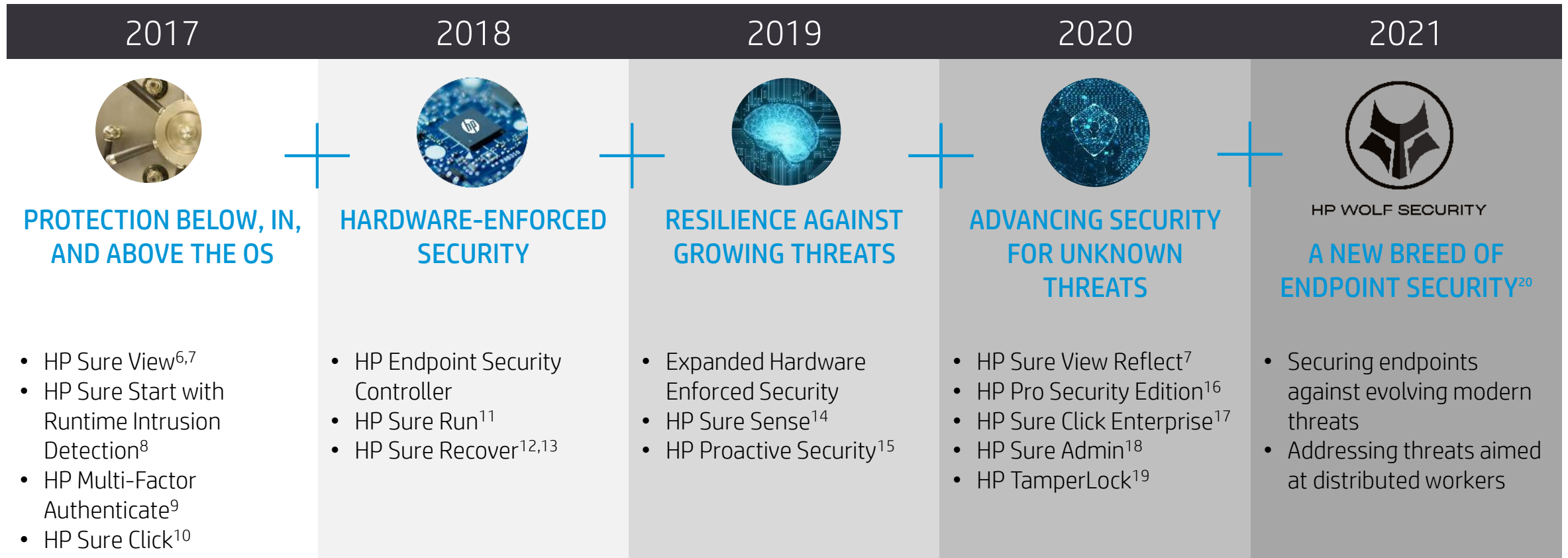
Delivers robust application security and prevents access to unverified code

Protects user identities with passwordless security

Extends security to the cloud to help protect devices, data, apps, and identities from anywhere

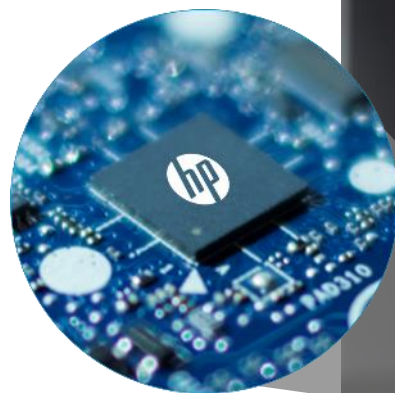


HOW HP BUILDS THE WORLD'S MOST SECURE AND MANAGEABLE PCs⁵



HP ENDPOINT SECURITY CONTROLLER

UNIQUE HARDWARE ENABLES RESILIENT DEVICES



Protection starts at the lowest level of the PC

- ✓ Hardware-enforced technology only on HP PCs
- ✓ ESC always running, even when the system is powered off
- ✓ Hardware Root of Trust: protection, detection & recovery
- ✓ Physically isolated

Protection continues during runtime

- ✓ Ongoing monitoring for health of HP's security system
- ✓ HP Wolf Security cryptographic functions secured by hardware

3RD PARTY
CERTIFIED

by an accredited
independent test lab
(Overseen by ANSSI)



HP Sure Start⁶



HP Sure Run¹¹



HP Sure Recover^{12,13}





HP WOLF SECURITY

HP WOLF SECURITY FOR BUSINESS

		DEVICE	IDENTITY/PRIVACY	DATA
HARDWARE-ENFORCED PROTECTION	ABOVE THE OS			HP SURE VIEW ^{6,7} Built-in Privacy Screen
				HP PRIVACY CAMERA / HP SURE SHUTTER ^{25,26} Built-in Webcam Privacy Shutter
	IN THE OS			HP SURE CLICK ¹⁰ Hardware-enforce secure browsing/viewing solution
		MICROSOFT SECURED-CORE PC ²³ Best In Class OS Security	HP PRESENCE AWARE Auto Login/Logoff	HP SURE SENSE ¹⁴ Protect from never-before-seen malware
	BELOW THE OS	HP BIOSPHERE ²⁴ Comprehensive BIOS Management		HP SURE ERASE ²⁷ Permanent Data Removal on HDD/SSD
		HP SURE START ⁸ Self-Healing Endpoint Security Controller Protection		CERTIFIED SELF-ENCRYPTING DRIVES HW Data Encryption
		HP SURE RUN ¹¹ Protect Applications with Persistence & Kill Prevention		
		HP SURE RECOVER ¹³ Embedded Image Recovery		
			HP SURE ADMIN ¹⁸ Cryptographically Secure BIOS Management	
		HP TAMPERLOCK ¹⁹ Tamper Protection		
		HP CLIENT SECURITY MANAGER ²⁸ Local Security Management (HP Sure Run & HP Sure Recover)		
		HP ENDPOINT SECURITY CONTROLLER		



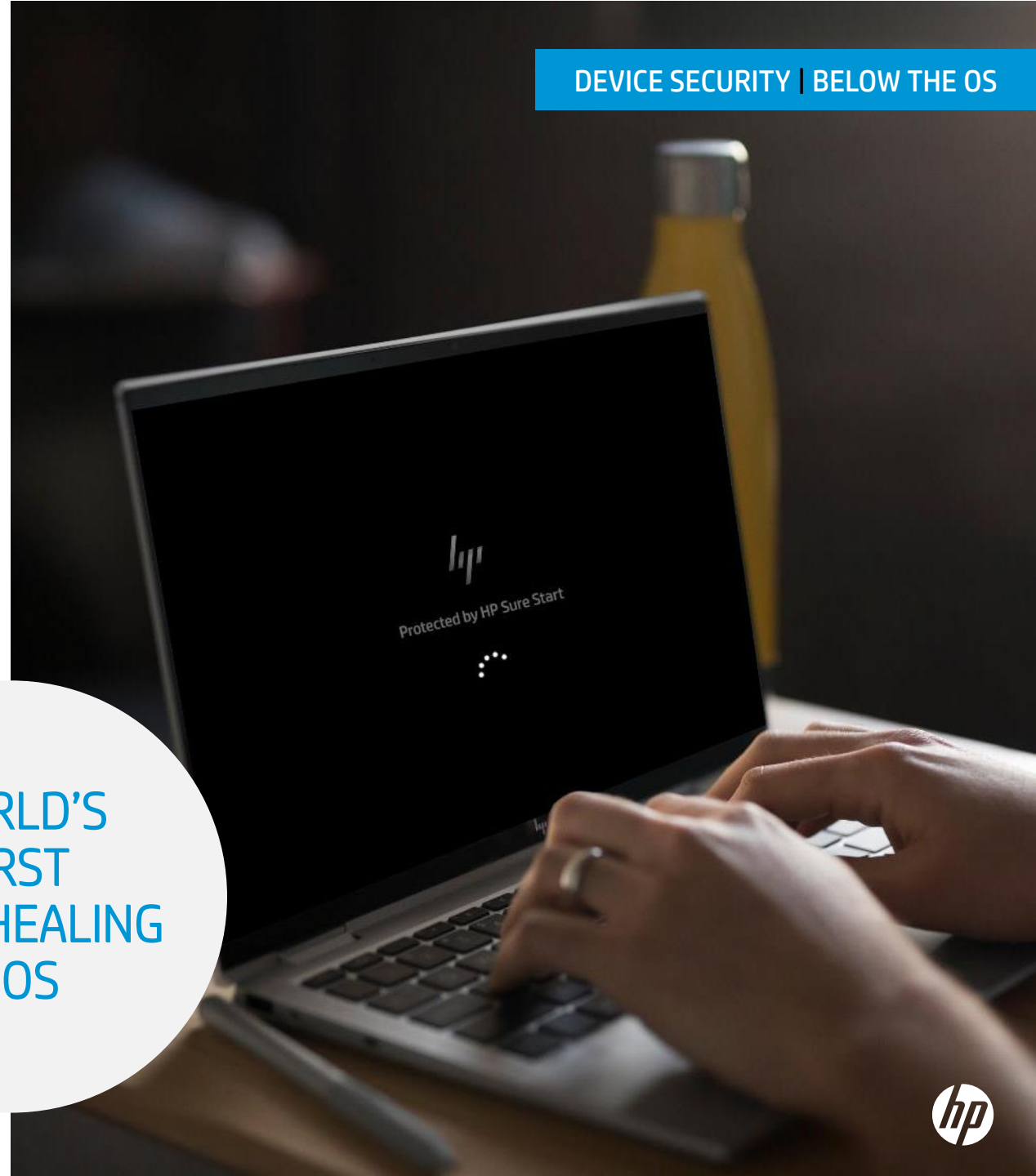


HP SURE START⁶

PROTECT WHERE ANTIVIRUS DOESN'T

Protecting your critical firmware
with HP Sure Start creates a
HARDENED ROOT OF TRUST.

**WORLD'S
FIRST
SELF-HEALING
BIOS**





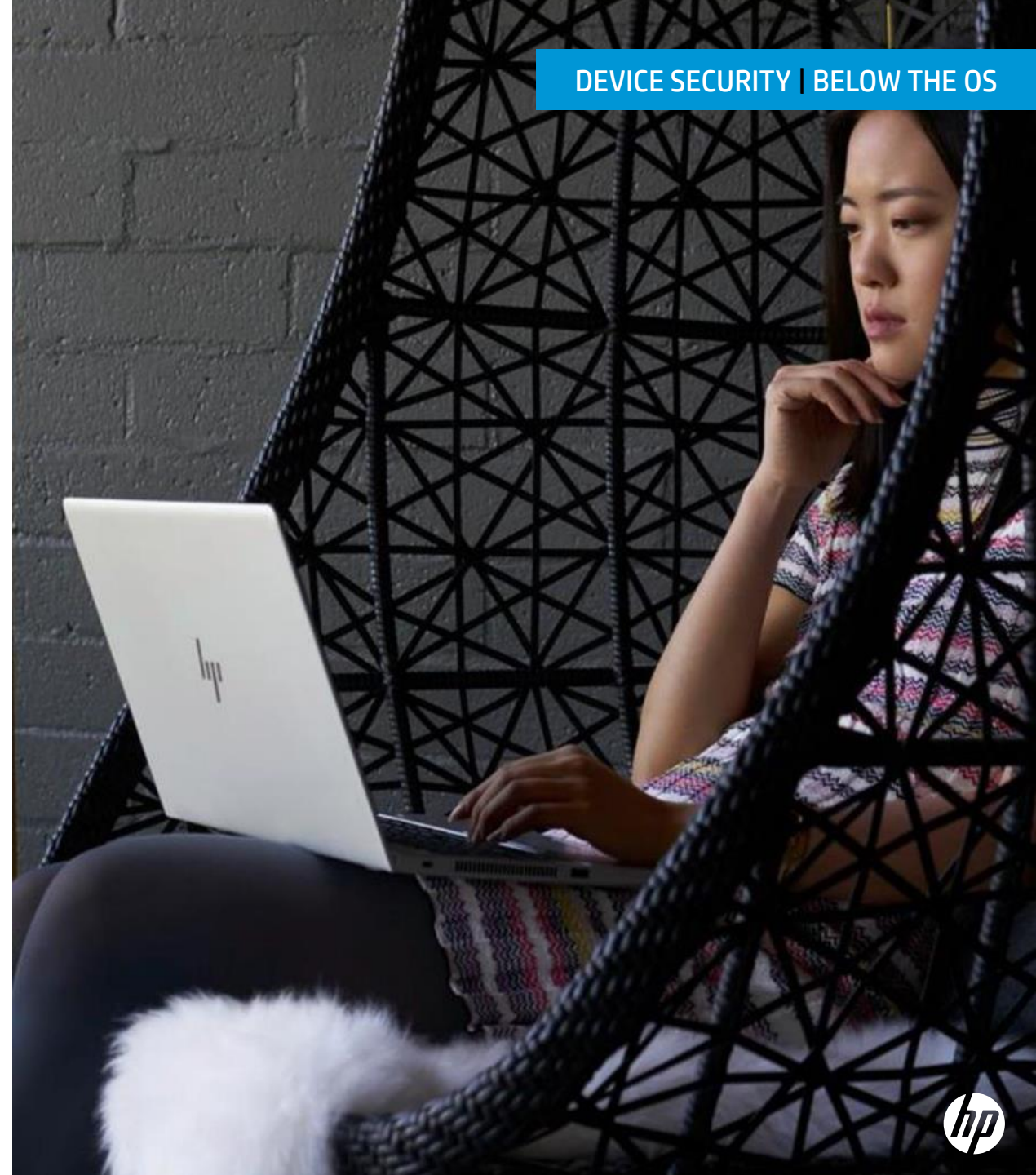
HP SURE RUN

PROTECTS AGAINST ATTACKERS TURNING OFF CRITICAL CUSTOM APPS



HP Sure Run¹¹ leverages the HP Endpoint Security Controller to:

- **MONITOR** key processes.
- **ALERT** of any changes.
- Dynamic **PERSISTENCE**.



HP SURE RECOVER^{12,13}

REMOVE THE RISK OF A TIME-CONSUMING BUSINESS DISRUPTION FROM A DESTRUCTIVE MALWARE ATTACK



SECURE REIMAGING
For trusted systems



RECOVER QUICKLY
In minutes instead of hours



SUPPORT BUSINESS CONTINUITY
with user-enabled reimaging

HOW LONG WOULD YOU NEED TO RECOVER 1,000 MACHINES?



“Continual trend of destructive attacks, wipers, malware, and new threats are coming out regularly”





HP TAMPERLOCK¹⁹

PEACE-OF-MIND FROM PHYSICAL INTRUSION THREATS



SENSORS DETECTION

For case intrusion, and configurable rich policy controls



PHYSICAL ATTACK PROTECTIONS

Against DMA attacks, flash replacement attacks, side channel attacks, TPM probing attacks + HP Endpoint Controller storage protection





HP SURE CLICK¹⁰

PROTECTION THAT DOESN'T REQUIRE DETECTION



SECURE BROWSING

- Isolates each tab in a secure virtual container.



FILE PROTECTION

- Protection for Email Attachments, Word and PDF files open in a secure virtual container.
- Word and PDF file download protection using IE, Edge, Chrome, and Firefox.

DEVICE SECURITY | IN & ABOVE THE OS



92% OF MALWARE IS DELIVERED THROUGH EMAIL³⁴

67% IS EMBEDDED IN WORD DOCUMENTS³⁴





HP SURE VIEW

HP SURE VIEW REFLECT⁷

- ✓ Copper tinted reflective privacy that's 2x more effective than the competition¹
- ✓ The world's most advanced privacy in its class⁴²
- ✓ Functions well in both bright & dark environments

HP SURE VIEW GEN3⁶

- ✓ Improved battery life
- ✓ Better visuals with brighter display and higher contrast ratio

DEVICE SECURITY | IN & ABOVE THE OS

▲ HP Sure View Reflect

▼ HP Sure View Gen3





HP PRIVACY CAMERA²⁵

MANUAL SHUTTER THAT PROTECTS FROM SURVEILLANCE AND SITS JUST BEHIND THE COVER GLASS OF YOUR PC.

Simply swipe the glass to enable the physical shutter, which blocks both the front- and back-facing cameras simultaneously.

- ✓ Easy-to-use physical webcam shutter
- ✓ Seamlessly integrated in the touch screen or as a pop-up webcam
- ✓ Provides peace-of-mind against malicious webcam surveillance





HP SURE SHUTTER²⁶

SIMPLY PRESS A KEY TO ACTIVATE AN ELECTRONIC SHUTTER OVER YOUR PC'S WEBCAM

Avoid any accidental video conferences and stay hidden from malicious attacks.



HP Sure Shutter uses the HP Endpoint Security Controller to control the camera shutter, isolating the experience from OS attacks.

DEVICE SECURITY | IN & ABOVE THE OS





HP PRESENCE AWARE⁴¹

PEACE-OF-MIND IN KEEPING YOUR DATA SAFE AND INSTANTLY RESUMING WORK

AUTOMATICALLY

LOCKS WHEN YOU LEAVE

Walk-away lock allows the system to dim and/or lock when you are no longer present in front of your system

WAKES WHEN YOU RETURN

Wake-on presence detects your presence and awakes system

DEVICE SECURITY | IN & ABOVE THE OS



SEAMLESSLY
AUTHENTICATES
WITH WINDOWS
HELLO™





THANK YOU

